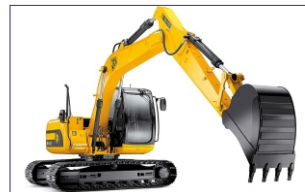
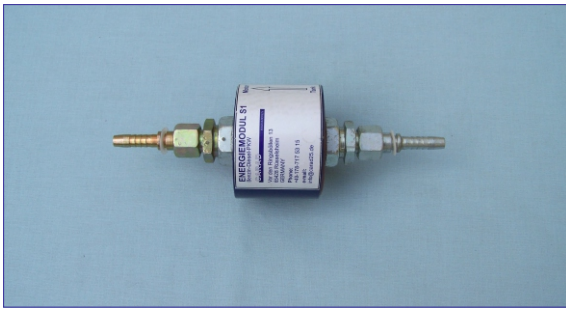


### ENERGY OPTIMISATION



**6 - 12 % FUEL SAVING**

**A truck with monthly driving range of 15.000 km and 35 liter / 100 km consumption saves approx. 4-6 tons diesel fuel annually !**



### **ENERGY-MODULE S1**

for gas and diesel limousine, connections/adaptors according to German Institute for Standardization (DIN) 3865, ISO 8434-1, for 8 mm of fuel tube, Dimension: 70 mm x 220 mm



### **ENERGY-MODULE DB1**

for gas limousine, connections/adaptors according to German Institute for Standardization (DIN) 3865, ISO 8434-1, for 8 mm of fuel tube, Dimensions: 55 mm x 320 mm



### **ENERGY-MODULE D2**

for diesel limousine, connections/adaptors according to German Institute for Standardization (DIN) 3865, ISO 8434-1, for 8 mm of fuel tube, Dimension: 70 mm x 320 mm



### **ENERGY-MODULE DL200**

for diesel truck, metal case IP 66, connections/adaptors according to German Institute for Standardization (DIN) 3865, ISO in 8434-1, for 10 mm fuel tube, Dimensions: 400 x 300 x 180 mm LxWxH



**CHIP CL 1** for suction air

**CHIP CF 1** for rims

**CHIP CK 1** for chassis



**TAKE-UP MOTION RM 8** for engine block

**TAKE-UP MOTION RB 8** for battery negative pole



### **TELEMATIC SYSTEM FLEETVIEW XMT**

with GPS receiver for satellite positioning and quadband GSM modem ( mobile network ) for data transfer, alarm signals, remote monitoring control processes. Power supply: 12–30 V



### **FLOW METERING SYSTEM DN 15 VZO**

for diesel, with mech. counter, 300 liter



### **FLOW METERING SYSTEM DFM 8**

For diesel, with mech. Counter and impulse generator for first running and return motion, 80 impulses per liter, power supply: 12–24 V



### **FUEL TUBE KS 8**

Acc. DIN 73379, inner diameter: 9 mm, - 35° to 80° C, operating pressure: 15 bar, for petrol, diesel crude oil, lube oil



### **HOSE CONNECTOR SV 8**

Steel, zined, for 9mm fuel tube



### **OIL ACCESSORY OZ**

For motor, gears, dosage: 7%, applicable for mineral and syntetic oils



### **SPECIAL - CABLE MK 35**

35 qmm

### **SPECIAL - CABLE MK 50**

50 qmm

# SYSTEM DESCRIPTION

The unusual effect of this energy saving system is based on the knowledge from quantum physics, chemistry and electrical engineering. The practical use of several inventions with the different mechanisms, which produce a 6 to 12 percent reduction of the fuel consumption in her cumulative effect, guarantee the efficiency of the whole system. Nevertheless, this is only one of several positive aspects.

## **Mode of operation:**

Via oscillation modulation the fuel molecules are affected. This results in a better pulverization and therefore a more efficient combustion takes place.

In the literature about quantum physics there it is described that every element owns his own oscillation pattern (there are no quiescent particles). Via holographic field hierarchy of atoms, molecules, crystals, cells etc. a permanent transfer of information takes place. Interaction between fields takes direct effect also through any material.

Special sticking – chips in the suction parts improve the current behaviour of the suction air.

Optimised combustion processes in the engine reduce the pollutant output, the engine runs smoother. Dissonant oscillations are reduced, which extends the life time of the engine.

The used components work in the sphere of sub atomic particles and molecules and they neither target the engine mechanics, nor the engines electronics.

**There are no negative effects! No manufacturer's guarantees are affected! No 'safety standards authority' registration is necessary!**

**Reduce your vehicle operating expenses and protect the environment!**

**On a truck (40 tons) CO<sup>2</sup> output is reduced by approx. 9 – 14 tons per year.**

To prove the effectiveness of the system in the customer vehicle, test drives can be arranged after exact instructions are provided. The fuel consumption (without and with optimization) can be determined and be documented exactly via the installation of the consumption measuring instruments, as well as via installation of a telematic system for the online data transfer.

By satellite – based locating system, and the data transfer of different measuring results, via mobile radio network and internet, all trips can be consistently controlled from the PC.

## **User economics:**

For the customer **no investment costs appear!**

CARAD – INNOVATIONEN invests and receives a monthly fee for use of the built – in components. This amounts, for example of a **truck, to 110 Euro**, for a **van 28 Euro**.

**WE INVEST, YOU SAVE!**

Member of SIGNO Organisation, Germanys biggest network for innovations, project management, Institute of German Economy, Cologne, sponsored by federal / ministry of economy and technology.